

# SERVICE INFORMATION LETTER

<b>MODEL AFFECTED:</b>	<b>GA107 P132 Console</b>
<b>SUBJECT:</b>	<b>Prevent incorrect positioning of the copilot's cyclic stick.</b>
<b>EFFECTIVITY:</b>	<b>Airbus AS350 Series helicopters with Eagle Copters GA107 P132 Console installed</b>
<b>COMPLIANCE:</b>	<b>During the next removal of the co-pilot cyclic stick, performed after receipt of this Service Information Letter (SIL).</b>

## DESCRIPTION:

It has come to Eagle's attention that some G12324 LH Cyclic Sticks, for the Eagle Copters GA107 P132 Console, no longer have the locator rivet installed. If Service Bulletin GA107-7 Rev. --, or later approved revision, has not been installed as required by Installation Instruction GA107-6 Rev. Q, or later approved revision, and the locator rivet is missing in the G12324 LH Cyclic Stick, there is the possibility for the cyclic stick to be installed 180° to its intended installation configuration. For more information regarding this SIL, reference Instructions for Continued Airworthiness ICA102-2 Rev. D, or later approved revision.

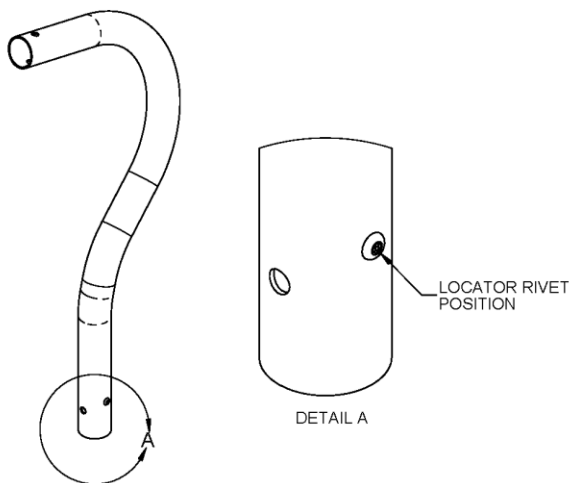


Figure 1: G12324 LH Cyclic Stick

## APPROVAL:

Not applicable.

## CONTACT INFORMATION:

For any questions regarding this SIL, please contact:

Eagle Copters Engineering

Phone: 1.403.250.7370 / 1.800.564.6469

[engineering@eaglecopters.com](mailto:engineering@eaglecopters.com)

ISSUED	REVISED	 • COPYRIGHT 2019 BY EAGLE COPTERS MAINTENANCE LTD. • THIS DOCUMENT IS PRIVATE AND CONFIDENTIAL AND IS SUPPLIED ON THE EXPRESS CONDITION THAT IT IS NOT TO BE USED FOR ANY PURPOSE OR COPIED OR COMMUNICATED TO ANY OTHER PERSON WITHOUT WRITTEN PERMISSION FROM EAGLE COPTERS MAINTENANCE LTD.	PAGE #	REV
2019.06.28			1 of 4	A

# 107-19-002

## MANPOWER:

Approximately 1.0 man-hour is required to complete **PART I** of this SIL.  
Approximately 1.0 man-hour is required to complete **PART II** of this SIL.  
Approximately 8.0 man-hour is required to complete **PART III** of this SIL.  
Approximately 1.0 man-hour is required to complete **PART IV** of this SIL.  
Man-hours are based on hands-on time, and may vary with personnel and facilities available.

## MATERIAL:

The following material is required for the accomplishment of this SIL and may be obtained through Eagle Copters at [manufacturing@eaglecopters.com](mailto:manufacturing@eaglecopters.com)

For the accomplishment of **PART II** of this SIL.

<u>Qty</u>	<u>Part Number</u>	<u>Alt. Part Number</u>	<u>Description</u>
1	MS20600AD-4-1	CR3212-4-1	Blind Rivet

For the accomplishment of **PART III** of this SIL.

<u>Qty</u>	<u>Part Number</u>	<u>Alt. Part Number</u>	<u>Description</u>
1	MS20600AD-4-1	CR3212-4-1	Blind Rivet

## SPECIAL TOOLS:

Not applicable.

## WEIGHT AND BALANCE:


No change.

## ELECTRICAL LOAD DATA:

No change.

## REFERENCES:

Service Bulletin GA107-7 Rev –, or later approved revision  
Installation Instruction GA107-6 Rev. Q, or later approved revision  
Instructions for Continued Airworthiness ICA107-2 Rev. D, or later approved revision

ISSUED	REVISED	 • COPYRIGHT 2019 BY EAGLE COPTERS MAINTENANCE LTD • THIS DOCUMENT IS PRIVATE AND CONFIDENTIAL AND IS SUPPLIED ON THE EXPRESS CONDITION THAT IT IS NOT TO BE USED FOR ANY PURPOSE OR COPIED OR COMMUNICATED TO ANY OTHER PERSON WITHOUT WRITTEN PERMISSION FROM EAGLE COPTERS MAINTENANCE LTD.	PAGE #	REV
2019.06.28			2 of 4	A

# 107-19-002

## ACCOMPLISHMENT INSTRUCTIONS:

### PART I: INSPECTION

1. Remove G12324 LH Cyclic Stick from the co-pilot side IAW the applicable Airbus Helicopter Aircraft Maintenance Manual (AMM). This information may be found in Chapter 67-11 depending on aircraft model.
2. Inspect co-pilot cyclic stick stand (ref. p/n 350A27159403) for locator rivet, installed per Service Bulletin GA107-7 Rev --, or later approved revision, shown in Figure 2. If the rivet is not present, install the rivet per PART III of this SIL.

Note: Confirm the Airbus co-pilot cyclic stick stand (P/N 350A27159403) has had any applicable Airbus Service bulletins completed.

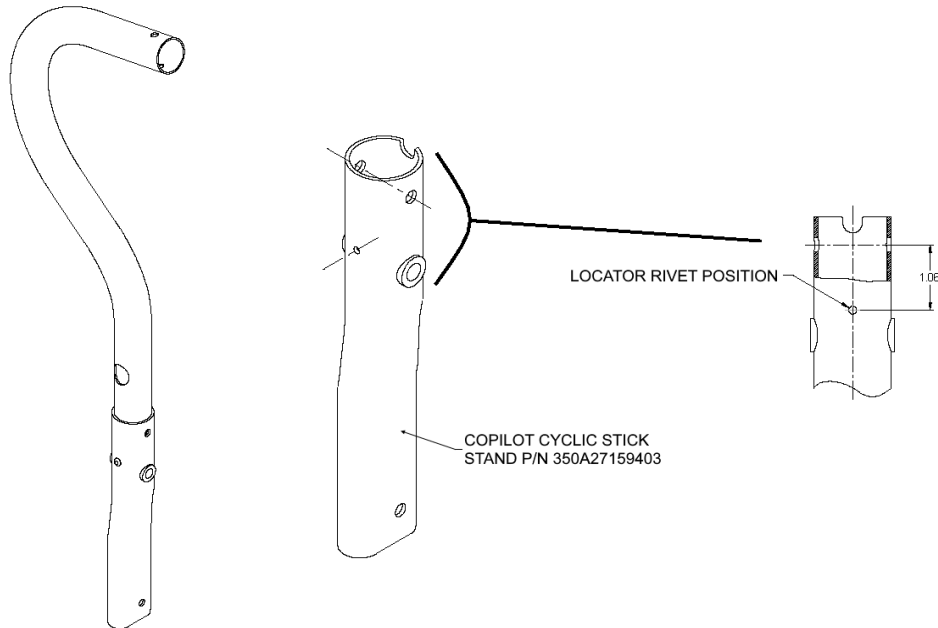


Figure 2: SB GA107-7 LH Cyclic Stick locator rivet


3. Inspect the G12324 LH Cyclic Stick for the installation of a locator rivet as shown in Figure 1.
4. If no rivet is present, install rivet per PART II of this SIL.
5. If rivet is present, continue to PART IV of this SIL.

### PART II: RIVET INSTALLATION

1. Install one MS20600AD-4-1 or CR3212-4-1 in pre-drilled hole, as shown in Figure 3.

### PART III: RIVET INSTALLATION

1. Install the rivet per Section 2.3 of Service Bulletin GA107-7 Rev --, or later approved revision.

ISSUED	REVISED	 • COPYRIGHT 2019 BY EAGLE COPTERS MAINTENANCE LTD. • THIS DOCUMENT IS PRIVATE AND CONFIDENTIAL AND IS SUPPLIED ON THE EXPRESS CONDITION THAT IT IS NOT TO BE USED FOR ANY PURPOSE OR COPIED OR COMMUNICATED TO ANY OTHER PERSON WITHOUT WRITTEN PERMISSION FROM EAGLE COPTERS MAINTENANCE LTD.	PAGE #	REV
2019.06.28			3 of 4	A

# 107-19-002

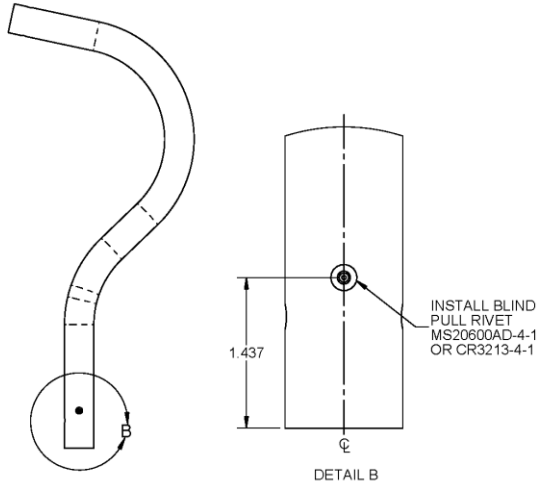



Figure 3: Rivet Installation

**PART IV: CYCLIC INSTALLATION AND CLOSE OUT**

1. Install the G12324 LH Cyclic Stick IAW with Service Bulletin GA107-7 Rev --, or later approved revision, and the applicable Airbus Helicopter Aircraft Maintenance Manual (AMM). This information may be found in Chapter 67-11 depending on aircraft model.
2. Perform the close out IAW with the applicable Airbus Helicopter Aircraft Maintenance Manual (AMM). This information may be found in Chapter 67-11 depending on aircraft model.
3. Verify that you have the latest version of the Instructions for Continued Airworthiness ICA107-2 Rev. D, or later approved revision.

ISSUED	REVISED	 <small>• COPYRIGHT 2019 BY EAGLE COPTERS MAINTENANCE LTD. •          THIS DOCUMENT IS PRIVATE AND CONFIDENTIAL AND IS SUPPLIED ON THE EXPRESS CONDITION THAT IT IS NOT TO BE USED FOR ANY PURPOSE OR COPIED OR COMMUNICATED TO ANY OTHER PERSON WITHOUT WRITTEN PERMISSION FROM EAGLE COPTERS MAINTENANCE LTD.</small>	PAGE #	REV
2019.06.28			4 of 4	A