

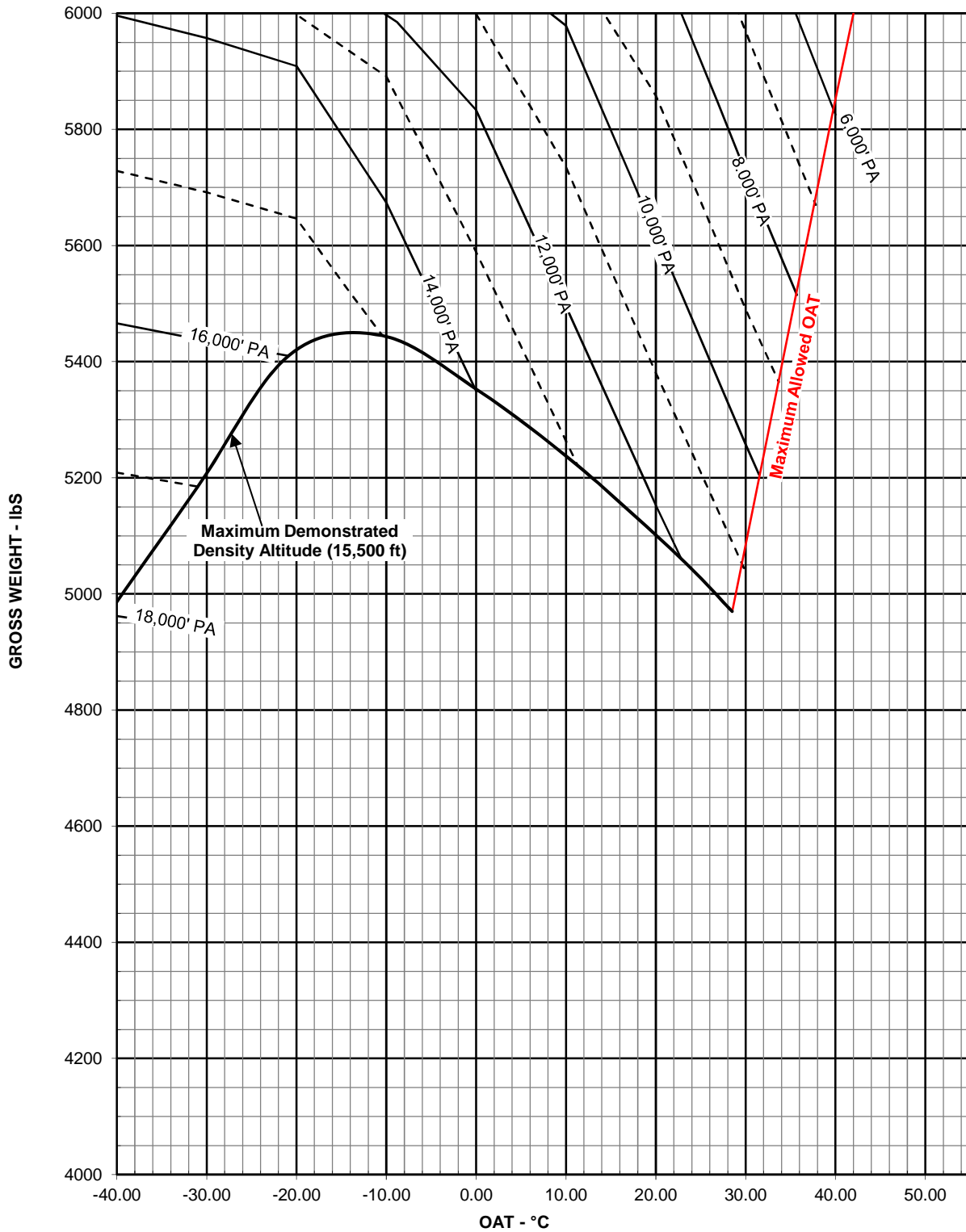
# HOVER CEILING IN GROUND EFFECT

TAKEOFF POWER  
ROTOR RPM 100%  
GENERATOR 50 AMPS

SKID HEIGHT 4 FT (1.2 METERS)  
HEATER OFF / ANTI-ICE OFF  
BASIC INLET

## NOTE

For TCCA/FAA approved hover ceiling above 15,500' DA see Figure 4-8  
HOVER CEILING IGE (Sheet 1 of 8) in BHT-407-FM-1, Rev 11 or later



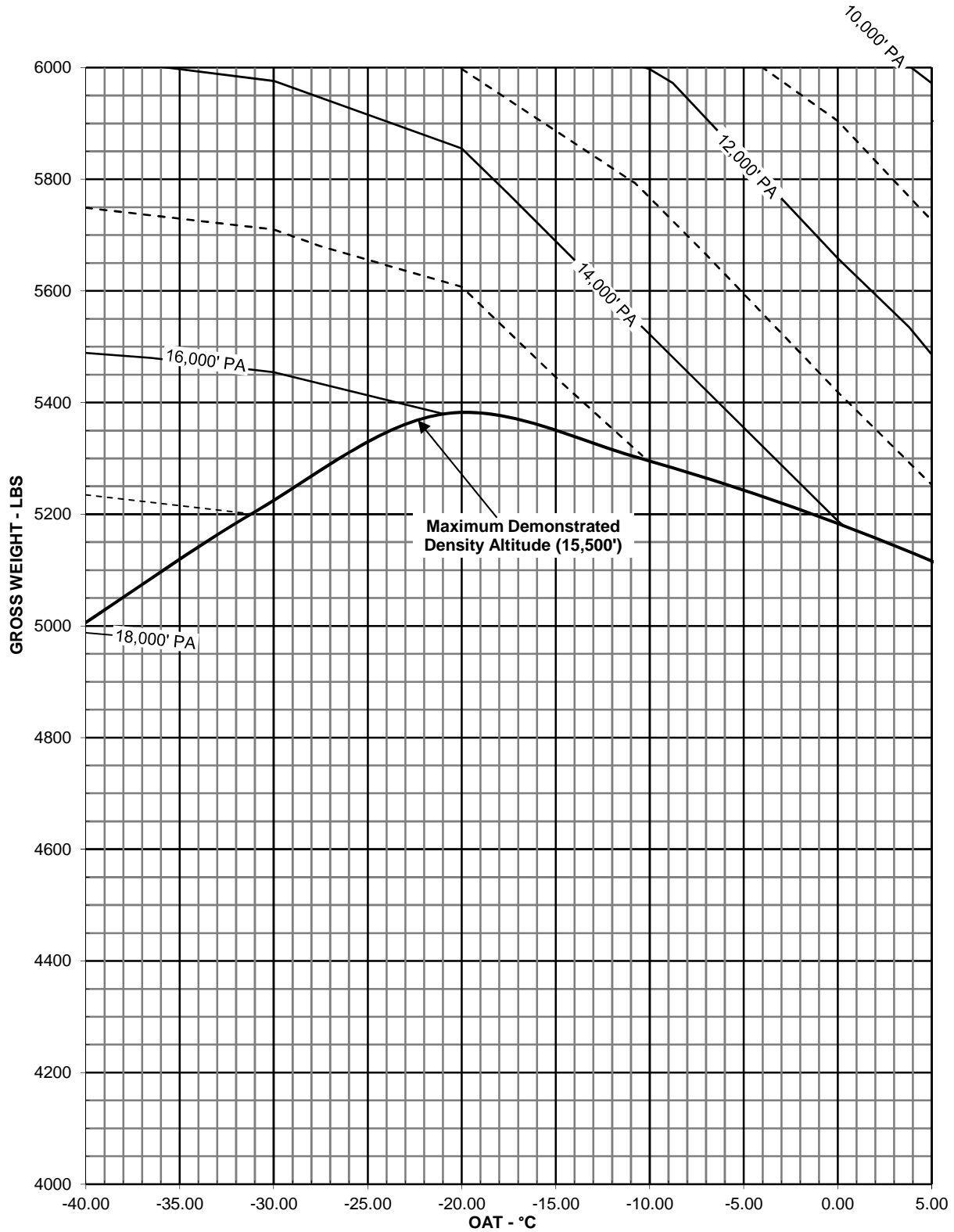
# HOVER CEILING IN GROUND EFFECT

TAKEOFF POWER  
ROTOR RPM 100%  
GENERATOR 50 AMPS

SKID HEIGHT 4 FT (1.2 METERS)  
HEATER OFF / ANTI-ICE ON BELOW 5°C  
BASIC INLET

## NOTE

For TCCA/FAA approved hover ceiling **above 15,500' DA** see Figure 4-8  
HOVER CEILING IGE (Sheet 2 of 8) in BHT-407-FM-1, Rev 11 or later



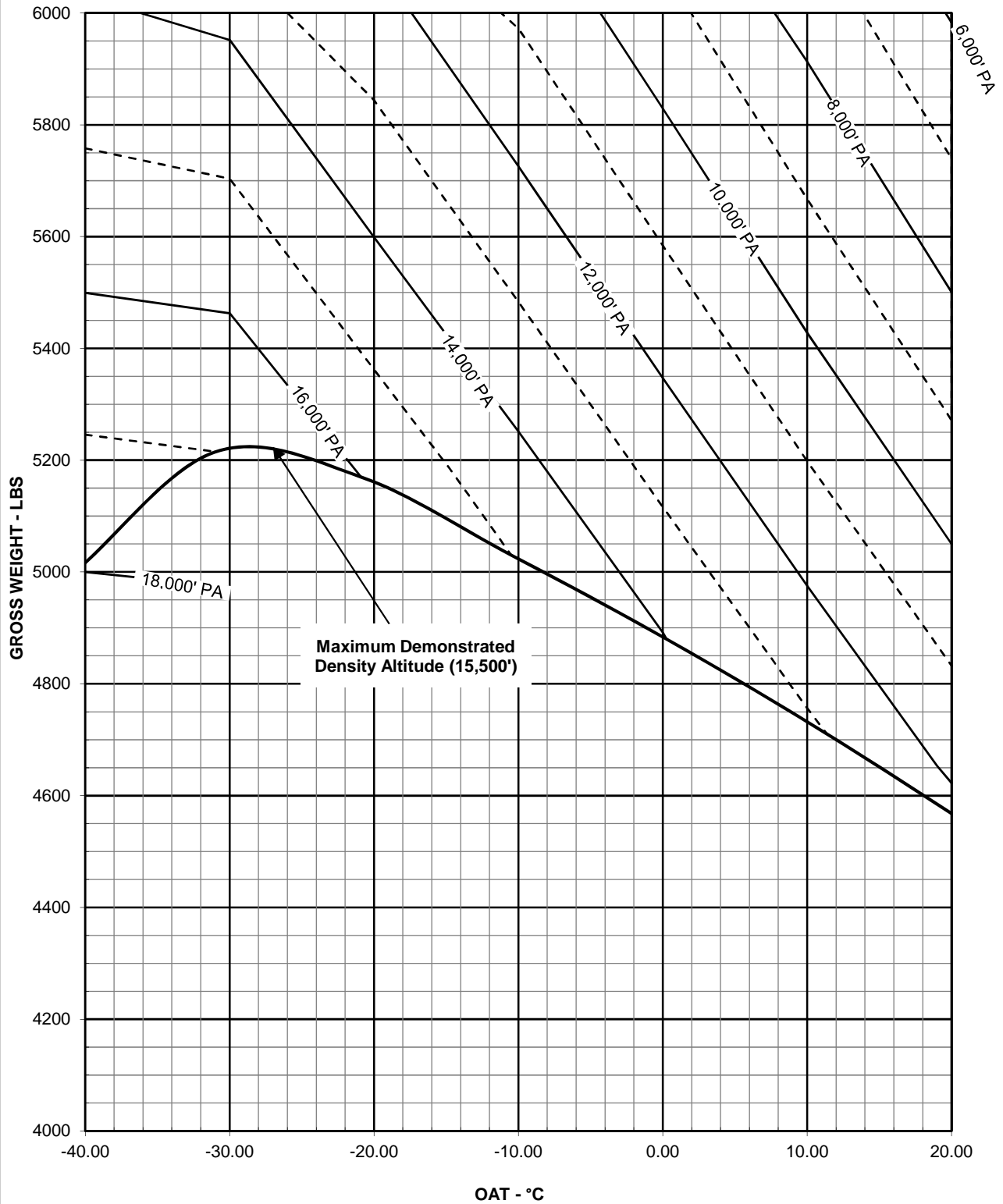
# HOVER CEILING IN GROUND EFFECT

TAKEOFF POWER  
ROTOR RPM 100%  
GENERATOR 50 AMPS

SKID HEIGHT 4 FT (1.2 METERS)  
HEATER ON BELOW 20°C / ANTI-ICE OFF  
BASIC INLET

## NOTE

For TCCA/FAA approved hover ceiling above 15,500' DA see Figure 4-8  
HOVER CEILING IGE (Sheet 3 of 8) in BHT-407-FM-1, Rev 11 or later



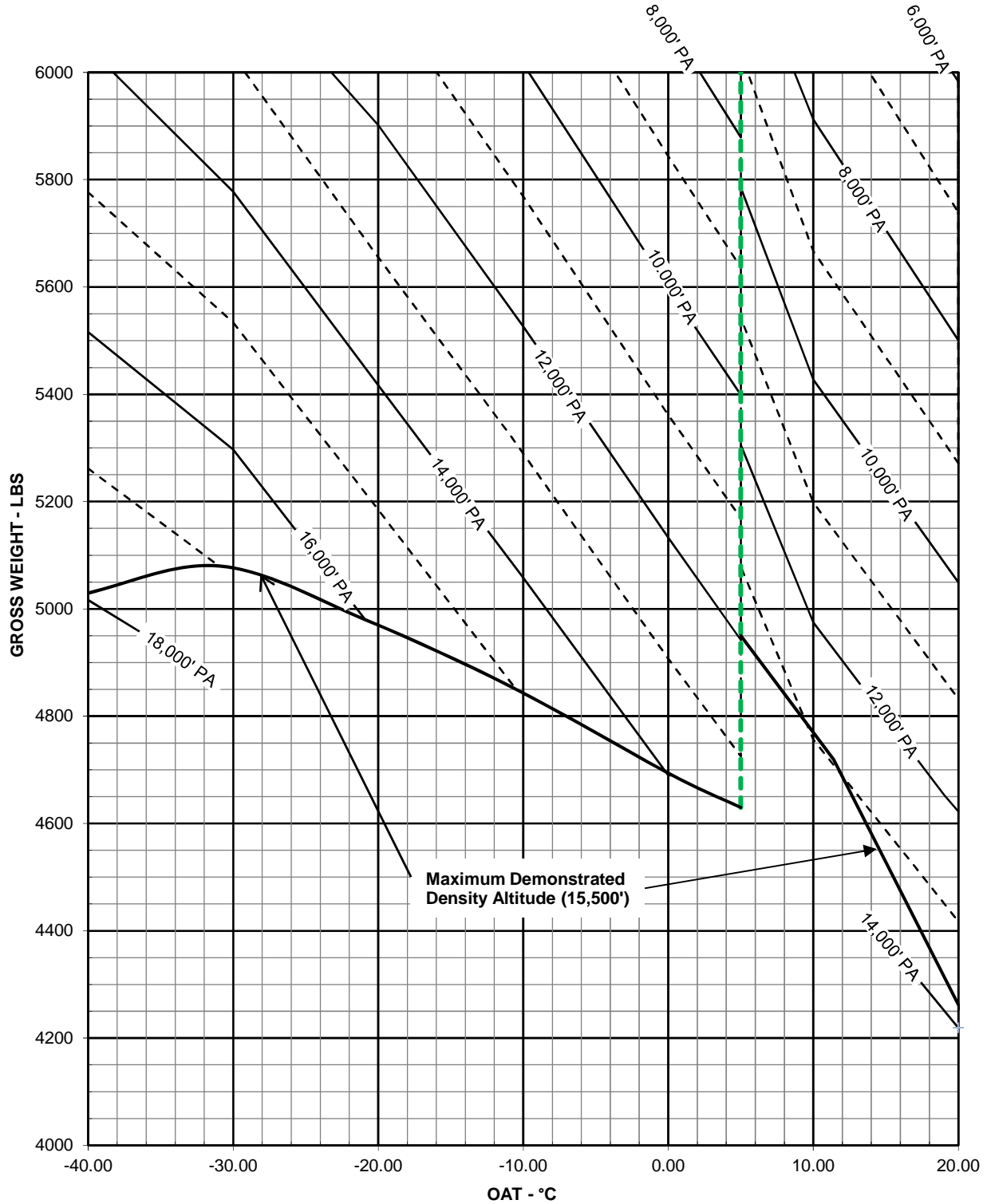
# HOVER CEILING IN GROUND EFFECT

TAKEOFF POWER  
ROTOR RPM 100%  
GENERATOR 50 AMPS

SKID HEIGHT 4 FT (1.2 METERS)  
HEATER ON BELOW 20°C / ANTI-ICE ON BELOW 5°C  
BASIC INLET

## NOTE

For TCCA/FAA approved hover ceiling above 15,500' DA see Figure 4-8  
HOVER CEILING IGE (Sheet 4 of 8) in BHT-407-FM-1, Rev 11 or later



Note: Dotted vertical green line at +5°C indicates Anti-Ice being switched ON/OFF

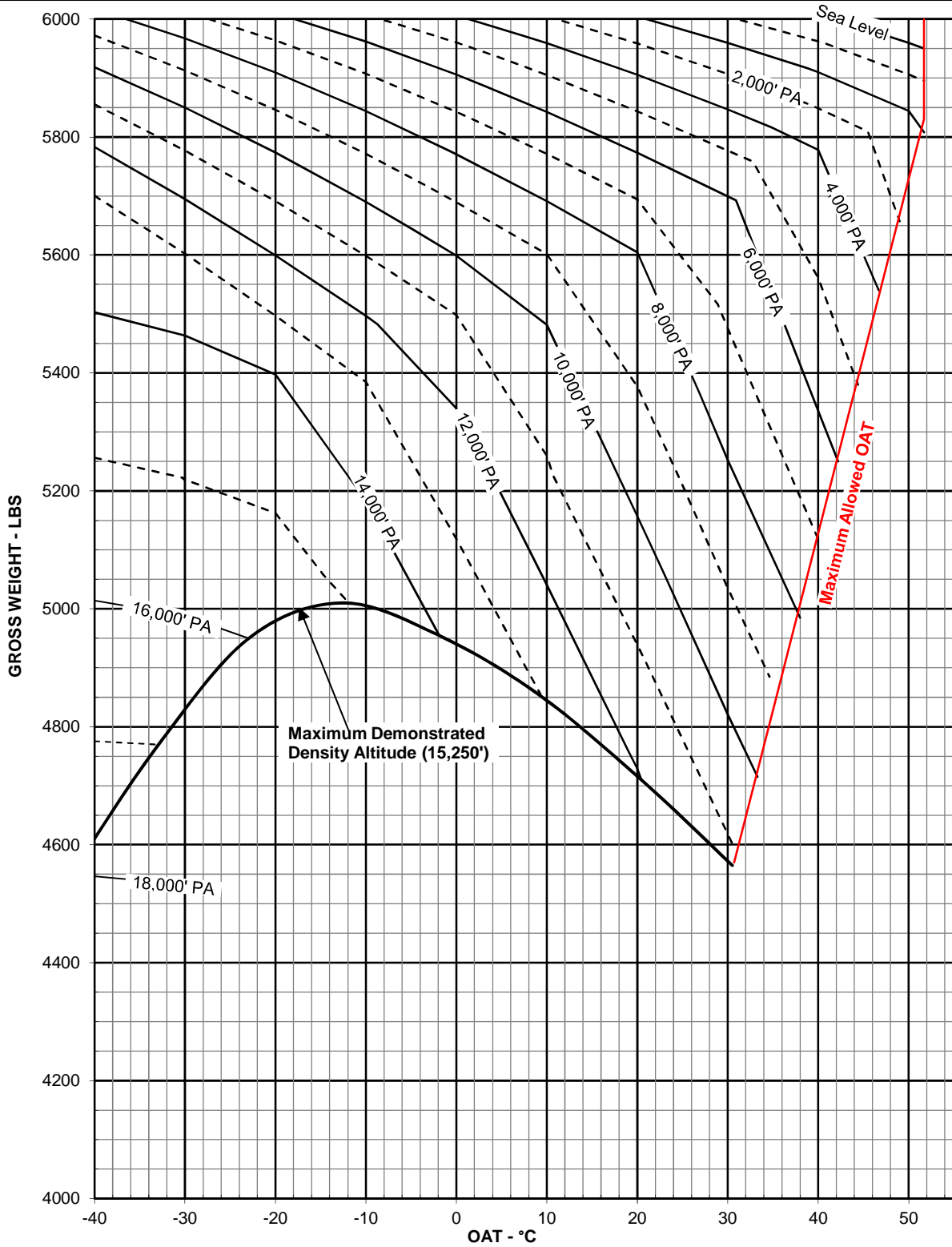
**HOVER CEILING  
OUT OF GROUND EFFECT**

**TAKEOFF POWER  
ROTOR RPM 100%  
GENERATOR 50 AMPS**

**SKID HEIGHT 40 FT (12.2 METERS)  
HEATER OFF / ANTI-ICE OFF  
BASIC INLET**

**NOTE**

For TCCA/FAA approved hover ceiling **above 15,250' DA** see Figure 4-9  
HOVER CEILING OGE (Sheet 1 of 8) in BHT-407-FM-1, Rev 11 or later



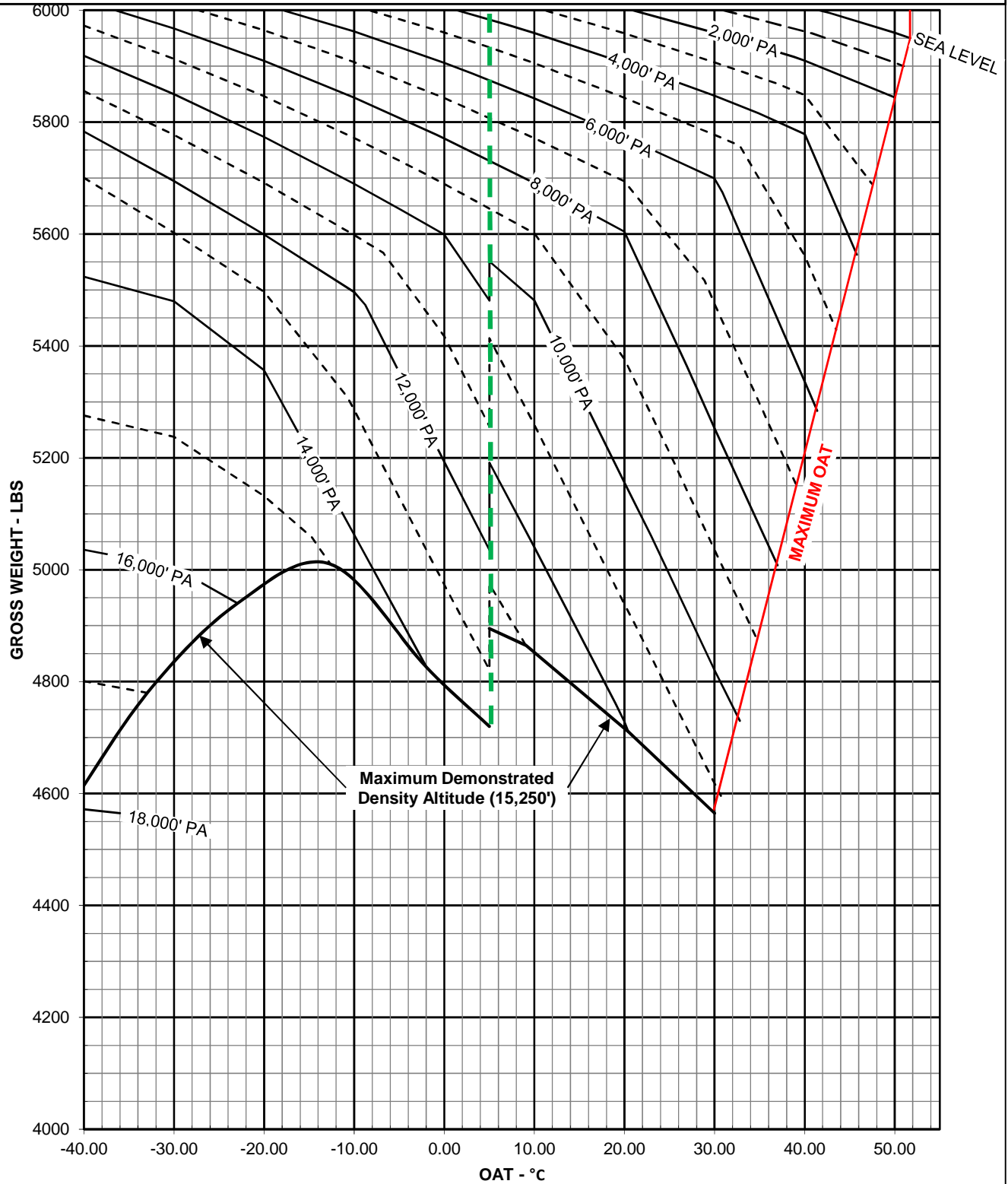
# HOVER CEILING OUT OF GROUND EFFECT

**TAKEOFF POWER  
ROTOR RPM 100%  
GENERATOR 50 AMPS**

**SKID HEIGHT 40 FT (12.2 METERS)  
HEATER OFF / ANTI-ICE ON BELOW +5°  
BASIC INLET**

**NOTE**

For TCCA/FAA approved hover ceiling **above 15,250' DA** see Figure 4-9  
HOVER CEILING OGE (Sheet 2 of 8) in BHT-407-FM-1, Rev 11 or later



Note: Dotted vertical green line at +5°C indicates Anti-Ice being switched ON/OFF

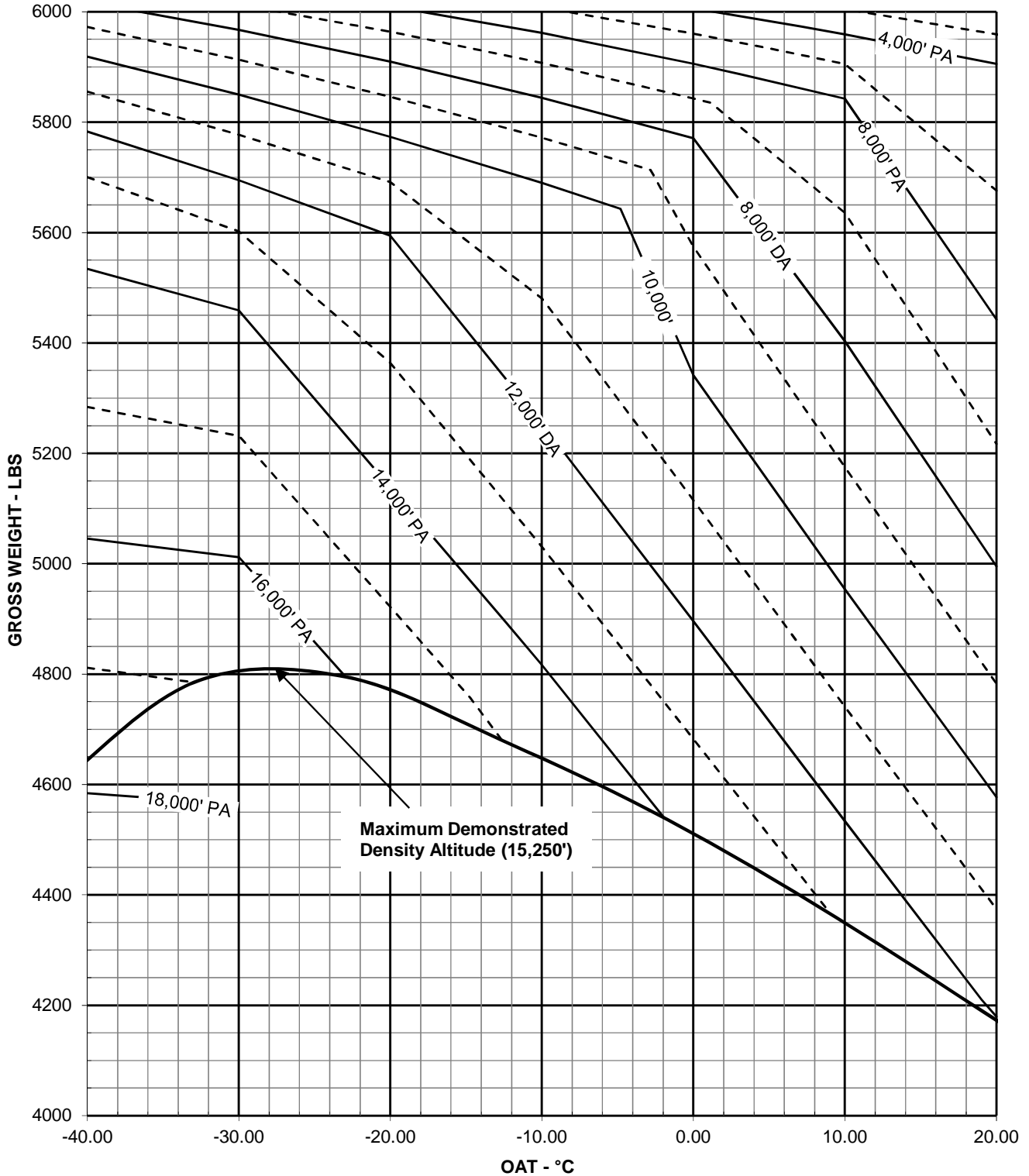
# HOVER CEILING OUT OF GROUND EFFECT

TAKEOFF POWER  
ROTOR RPM 100%  
GENERATOR 50 AMPS

SKID HEIGHT 40 FT (12.2 METERS)  
HEATER ON BELOW 20°C / ANTI-ICE OFF  
BASIC INLET

## NOTE

For TCCA/FAA approved hover ceiling **above 15,250' DA** see Figure 4-9  
HOVER CEILING OGE (Sheet 3 of 8) in BHT-407-FM-1, Rev 11 or later



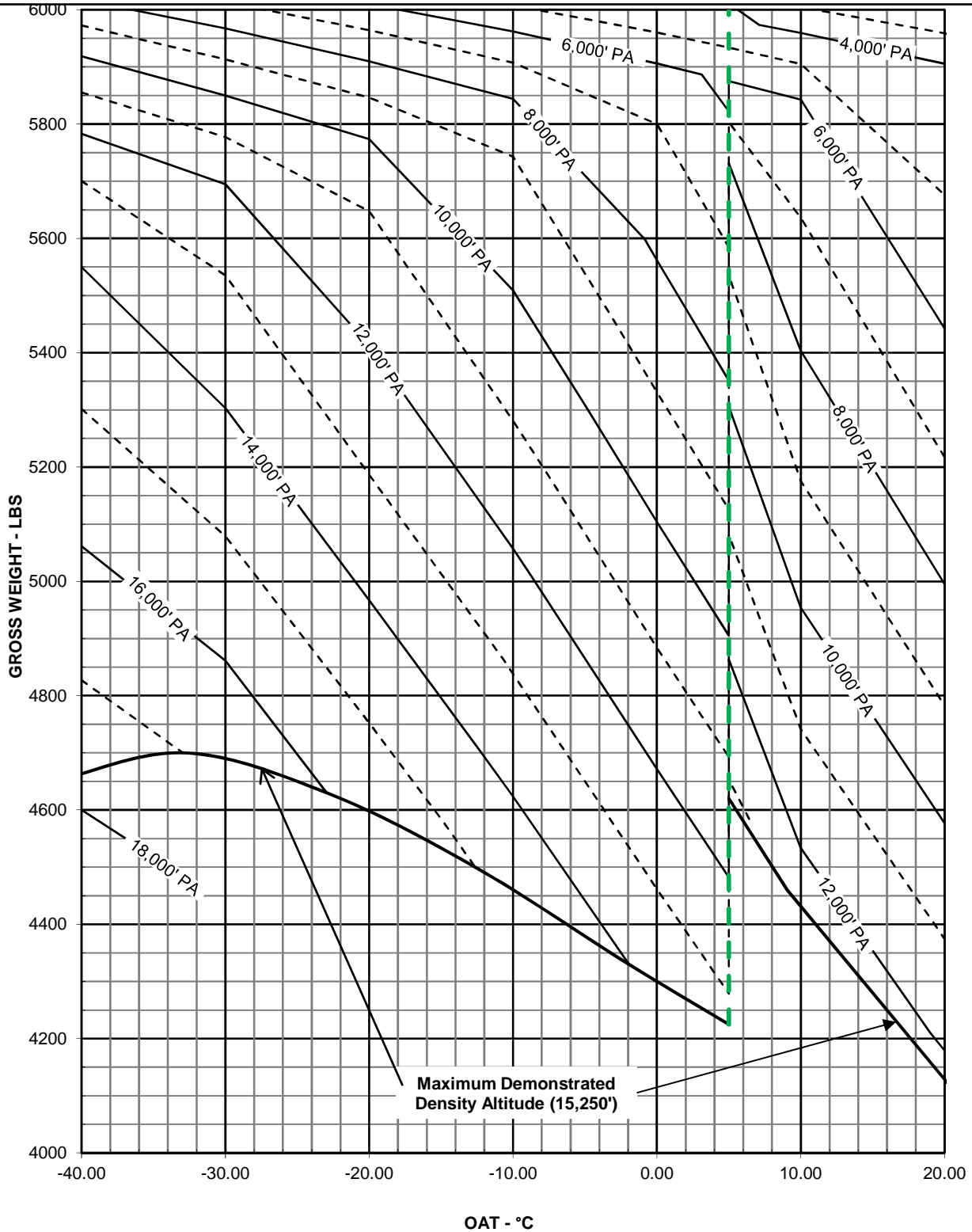
# HOVER CEILING OUT OF GROUND EFFECT

TAKEOFF POWER  
ROTOR RPM 100%  
GENERATOR 50 AMPS

SKID HEIGHT 40 FT (12.2 METERS)  
HEATER ON BELOW 20°C / ANTI-ICE ON BELOW 5°C  
BASIC INLET

## NOTE

For TCCA/FAA approved hover ceiling above 15,250' DA see Figure 4-9  
HOVER CEILING OGE (Sheet 4 of 8) in BHT-407-FM-1, Rev 11 or later



Note: Dotted vertical green line at +5°C indicates Anti-Ice being switched ON/OFF